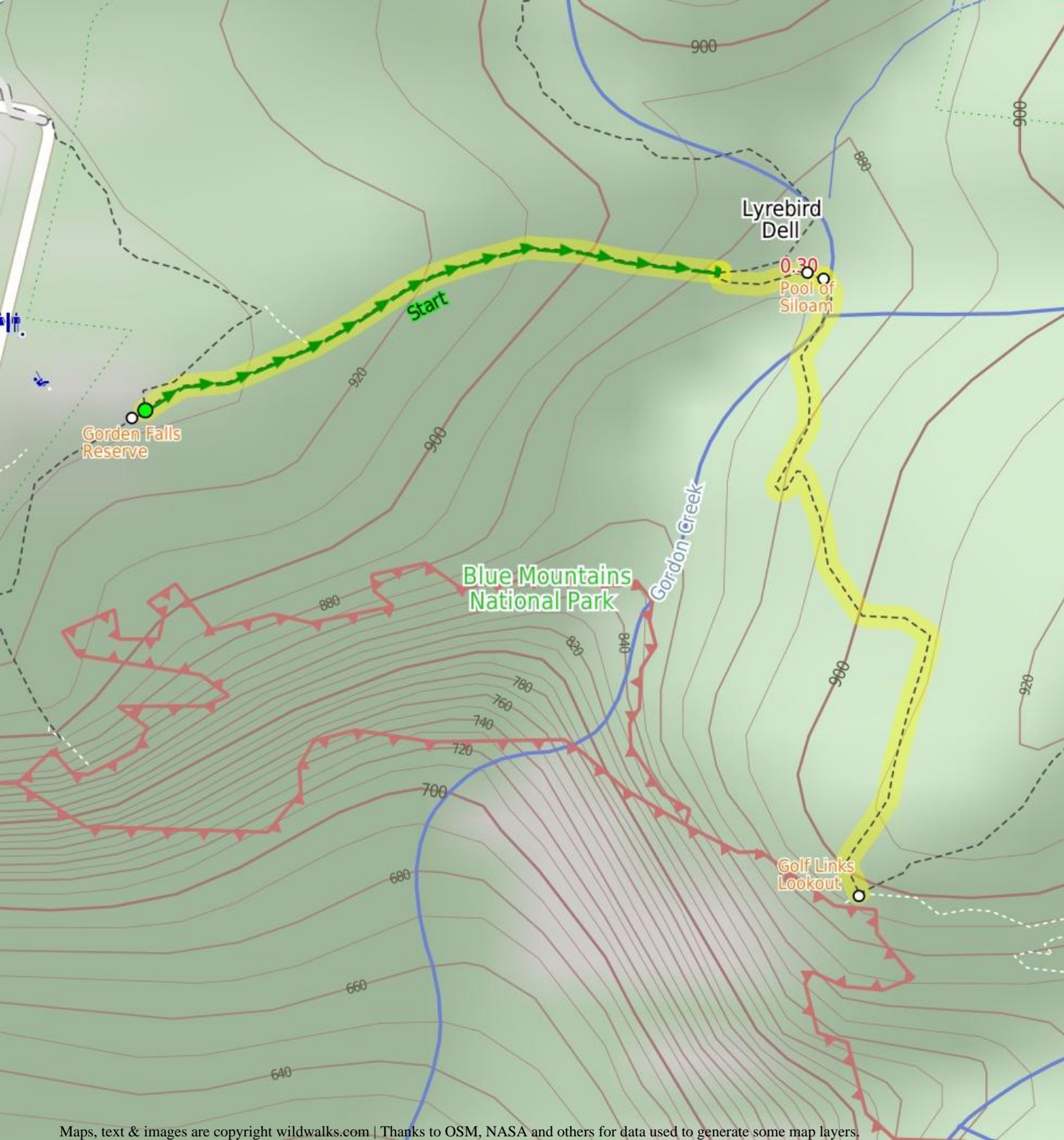


## Gordon Reserve to Golf Links Lookout



**1 Hr**

**Moderate track**

3

**1.4 km Return**

**↑ 133m**

A walk with two spectacular features, the Pool of Siloam and Golf Links Lookout. A fantastic waterfall and an excellent view which really make this walk a stunning way to explore the bushland.

870m

933m

Blue Mountains National Park



### Are you ready to have fun?

Please ensure you and your group are well prepared and equipped for all possible hazards and delays. Check park closures, weather information and Fire Danger Rating before setting out. Optional side trips and alternate routes noted are not included in this walks overall grade, length or time estimate. Please allow extra time for resting and exploring areas of interest. The authors, staff and owners of wildwalks take care in preparing this information but will not accept responsibility for any inconvenience, loss or injury you may experience. Please take care, have fun - Happy Walking.

**Getting there** You can get to Gordon Falls Reserve (gps: -33.7247, 150.3327) by car or bus. Car: There is free parking available.

This is a return, so you will finish back at the start.

Find up to date and more information including; travel directions, weather, park closures and walker feedback at <http://wild.tl/grtgll>

### 0 | Gordon Falls Reserve

Gordon Falls Reserve is just off Lone Pine Ave near the intersection with Olympian Pde, Leura. The park has car parking, electric BBQ's, toilets, garbage disposal, children's play equipment, picnic tables and bench seats. The park has plenty of open area and some shaded spots. There are a number of artificial cave shelters, with picnic tables inside.

### 0 | Gordon Falls Reserve

(300 m 11 mins) From the lower side of Gordon Falls Reserve, this walk follows the 'Pool of Siloam' track sign into the bush, down the gentle hill (passing a track on the left). The walk passes some interesting information signs on local flora and fauna as the track becomes steeper. Continuing down the stairs, the track leads to a rock wall and a handrail. The walk heads along the base of this cliff, under a small waterfall and comes to a three-way intersection (with signposts down to the right and on the other side).

Turn right: From the intersection, this walk follow the 'Pool of Siloam' sign down the steps. The track passes under a small overhang then crosses Gordon Creek on a footbridge in front of the lovely falls and the Pool of Siloam.

### 0.3 | Pool of Siloam

The Pool of Siloam is a lovely waterhole and waterfall on Gordon Creek in the Blue Mountains National Park. This waterfall is surrounded by a moss and fern filled gully with sandstone cliffs around the edges. There is a sandstone overhang next to the waterfall. The shallow sandy pool is a lovely cool place, a great spot to stop for a snack. The track

crosses the creek using a bridge in front of the waterfall. The pool derives its name from the 'Pool of Siloam' (Birkhat Hashiloah - Hebrew) in the City of David and in the Bible is where Jesus sends a man to heal him of his blindness.

### 0.3 | Pool of Siloam

(420 m 12 mins) Veer right: From the Pool of Siloam, this walk follows the 'Golf Links Lookout' sign away from the falls and up the steps (with the creek initially on the right). The track winds fairly steeply at first up the hill. There are a few nice views along the way and, as the track flattens out, it comes to an intersection and the fenced 'Golf Links Lookout'.

### 0.72 | Golf Links Lookout

Golf Links Lookout is a fenced and signposted lookout in the Blue Mountains National Park, near Gladstone Rd Leura. The lookout has great views across the Jamison Valley to the *back* of the Three Sisters. To the left there is a good view along Narrow Neck and to Mount Solitary. There is no view of the nearby Gordon Falls.

